



Cart 1

Multipurpose Cart

FOR INFO OR TO PLACE AN ORDER, CONTACT:

Emily Hart

ehart@pascoinc.net

Pasco Brokerage

800.788.8216

FEATURES

- 74" long x 30" wide x 34" high
- Two separate insulated wells (3-pan and 2-pan)
- Sloped over-shelf accommodates pans or baskets
- Retractable buffet shield included
- Welded push handle
- Fold down shelf for POS
- Heavy-duty casters for easy transport
- Adjustable height signpost allows access through doorways
- Sign post, station sign and menu board

GRAPHIC OPTIONS (CHECK ONE)

- ☐ Red/White (as shown) ☐ Black (see Cart 4)

SINGLE-SIDED CART 1

If ordering a height other than the standard 34", what height? _____

Qty: ____ @ \$6,159 = _____ (Red/White)

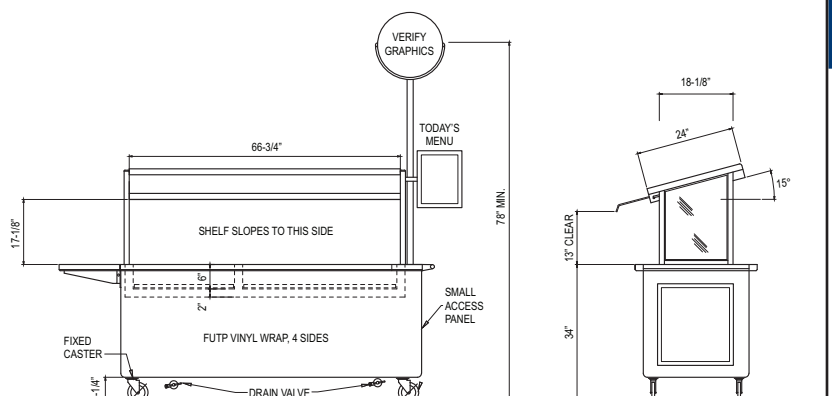
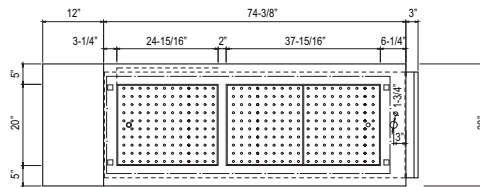
Qty: ____ @ \$6,159 = _____ (Black)

(+ FREIGHT CHARGES: Call or email Pasco for freight rates)



I have reviewed and approve these order details (please sign here)

Above pricing is in effect from October 17, 2016 through April 17, 2017. Any sell sheets that preceded this are null and void. We reserve the right to change specifications and product design without notice. Such revisions do not entitle the buyer to corresponding changes, improvements, additions or replacement for previously purchased equipment.



NDC
NATIONAL DAIRY COUNCIL

FUEL UP

A PROGRAM OF
Play60

THE NFL MOVEMENT FOR AN ACTIVE GENERATION

©2014 National Dairy Council. Fuel Up is a service mark of National Dairy Council.



Changing
how food is served.

LTI, INC.
lowtempind.com

9192 Tara Boulevard
Jonesboro, GA 30236



Cart 2

High-Volume Breakfast Cart

FOR INFO OR TO PLACE AN ORDER, CONTACT:

Emily Hart

ehart@pascoinc.net

Pasco Brokerage

800.788.8216

FEATURES

- 74" long x 30" wide x 34" high
- Two separate insulated wells (3-pan and 2-pan)
- Two-tier sloped over-shelf holds pans or baskets
- Welded push handle
- Fold down shelf for POS
- Heavy-duty casters for easy transport
- Adjustable height signpost allows access through doorways
- Sign post, station sign and menu board
- Single- and double-sided options available

GRAPHIC OPTIONS (CHECK ONE)

- ☐ Black (as shown) ☐ Red/White (see Cart 1)

SINGLE-SIDED CART 2

If ordering a height other than the standard 34", what height? _____

Qty: ____ @ \$5,995 = _____ (Black)

Qty: ____ @ \$5,995 = _____ (Red/White)

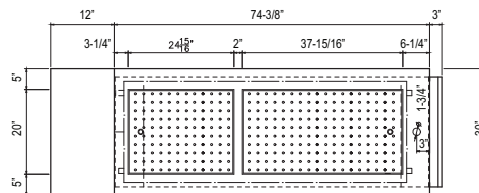
DOUBLE-SIDED CART 2

If ordering a height other than the standard 34", what height? _____

Qty: ____ @ \$6,366 = _____ (Black)

Qty: ____ @ \$6,366 = _____ (Red/White)

(+ FREIGHT CHARGES: Call or email Pasco for freight rates)



I have reviewed and approve these order details (please sign here)

Above pricing is in effect from October 17, 2016 through April 17, 2017. Any sell sheets that preceded this are null and void. We reserve the right to change specifications and product design without notice. Such revisions do not entitle the buyer to corresponding changes, improvements, additions or replacement for previously purchased equipment.

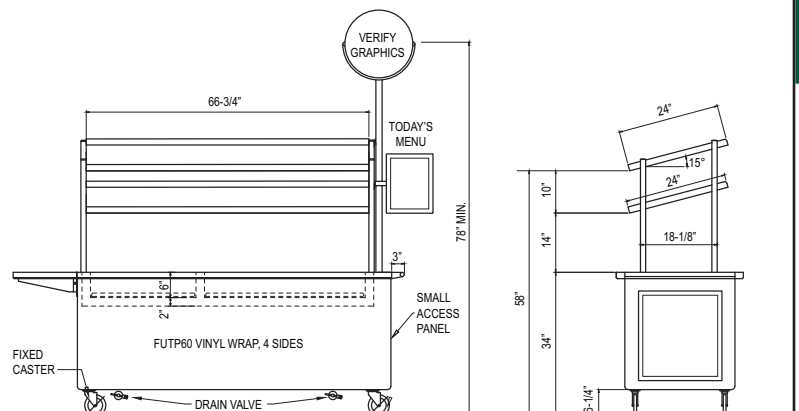


©2014 National Dairy Council. Fuel Up is a service mark of National Dairy Council.



LTI, INC.
lowtempind.com

9192 Tara Boulevard
Jonesboro, GA 30236





Cart 3

Streamline Two-Sided Cart

FOR INFO OR TO PLACE AN ORDER, CONTACT:

Emily Hart

ehart@pascoinc.net

Pasco Brokerage

800.788.8216

FEATURES

- 60" long x 30" wide x 34" high
- One 3-pan insulated well
- Sloped over-shelf accommodates pans or baskets
- Welded push handle
- Fold down shelf for POS
- Heavy-duty casters for easy transport
- Single- and double-sided options available

CART BODY COLOR OPTIONS (CHECK ONE)

☐ Red (as shown) ☐ White ☐ Blue

SINGLE-SIDED CART 3

If ordering a height other than the standard 34", what height? _____

Qty: ____ @ \$4,420 = _____ (Red)

Qty: ____ @ \$4,420 = _____ (White)

Qty: ____ @ \$4,420 = _____ (Blue)

DOUBLE-SIDED CART 3

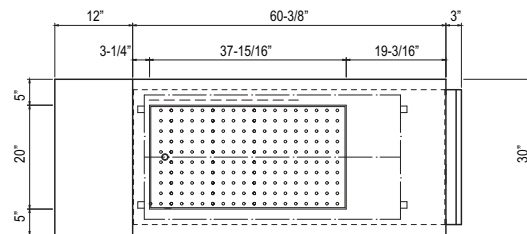
If ordering a height other than the standard 34", what height? _____

Qty: ____ @ \$4,591 = _____ (Red)

Qty: ____ @ \$4,591 = _____ (White)

Qty: ____ @ \$4,591 = _____ (Blue)

(+ FREIGHT CHARGES: Call or email Pasco for freight rates)



I have reviewed and approve these order details (please sign here)

Above pricing is in effect from October 17, 2016 through April 17, 2017. Any sell sheets that preceded this are null and void. We reserve the right to change specifications and product design without notice. Such revisions do not entitle the buyer to corresponding changes, improvements, additions or replacement for previously purchased equipment.

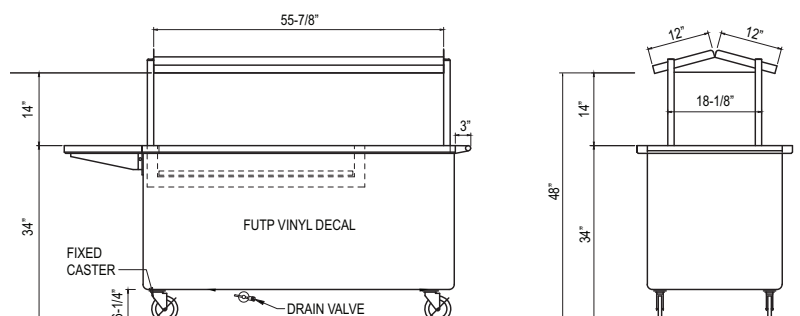


©2014 National Dairy Council. Fuel Up is a service mark of National Dairy Council.



LTI, INC.
lowtempind.com

9192 Tara Boulevard
Jonesboro, GA 30236





Cart 4

4-Crate Eutectic Breakfast Cart

FOR INFO OR TO PLACE AN ORDER, CONTACT:

Emily Hart

ehart@pascoinc.net

Pasco Brokerage

800.788.8216

FEATURES

- 74" long x 30" wide x 34" high
- No electricity required
- Four each 13" x 13" milk crate capacity
- Seven each eutectic freezer packs
- Two-tier sloped over-shelf holds pans or baskets
- Welded push handle
- Fold down shelf for POS
- Heavy-duty casters for easy transport
- Adjustable height signpost allows access through doorways
- Sign post, station sign and menu board
- Single- and double-sided options available

GRAPHIC OPTIONS (CHECK ONE)

- ☐ Black (as shown) ☐ Red/White (see Cart 1)

SINGLE-SIDED CART 4

Qty: ____ @ \$6,932 = _____ (Black)

Qty: ____ @ \$6,932 = _____ (Red/White)

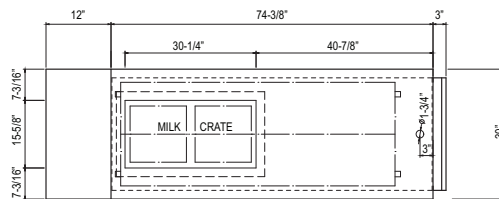
(+ FREIGHT CHARGES: Call or email Pasco for freight rates)

DOUBLE-SIDED CART 4

Qty: ____ @ \$7,232 = _____ (Black)

Qty: ____ @ \$7,232 = _____ (Red/White)

(+ FREIGHT CHARGES: Call or email Pasco for freight rates)



I have reviewed and approve these order details (please sign here)

Above pricing is in effect from October 17, 2016 through April 17, 2017. Any sell sheets that preceded this are null and void. We reserve the right to change specifications and product design without notice. Such revisions do not entitle the buyer to corresponding changes, improvements, additions or replacement for previously purchased equipment.

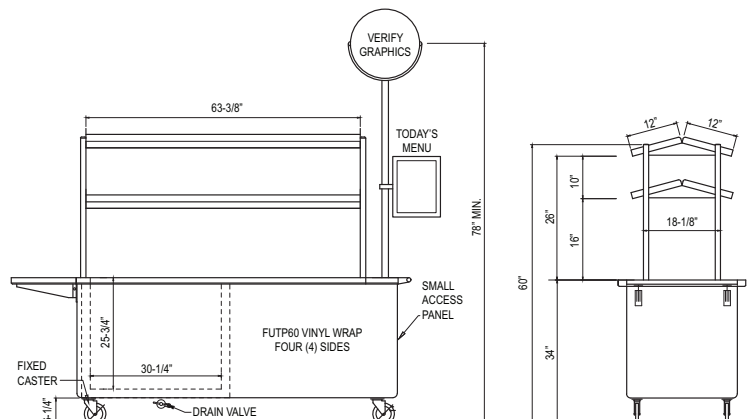


©2014 National Dairy Council. Fuel Up is a service mark of National Dairy Council.



LTI, INC.
lowtempind.com

9192 Tara Boulevard
Jonesboro, GA 30236





Cart 5

Streamline Hot Well Cart

FOR INFO OR TO PLACE AN ORDER, CONTACT:

Emily Hart

ehart@pascoinc.net

Pasco Brokerage

800.788.8216

FEATURES

- 60" long x 30" wide x 34" high
- Sloped over-shelf accommodates pans or baskets
- Welded push handle
- 2-pan insulated ice pan
- Hot foods served from hot well
- Fold down shelf for POS
- Heavy-duty casters for easy transport
- Single- and double-sided options available
- 120 Volt / 1 Phase / 661 watts / 5.5 amps

CART BODY COLOR OPTIONS (CHECK ONE)

☐ Red (as shown) ☐ White ☐ Blue

SINGLE-SIDED CART 5

If ordering a height other than the standard 34", what height? _____

Qty: _____ @ \$5,744 = _____ (Red)

Qty: _____ @ \$5,744 = _____ (White)

Qty: _____ @ \$5,744 = _____ (Blue)

(+ FREIGHT CHARGES: Call or email Pasco for freight rates)

DOUBLE-SIDED CART 5

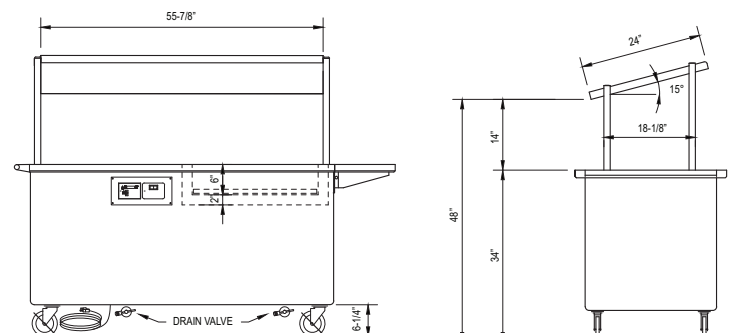
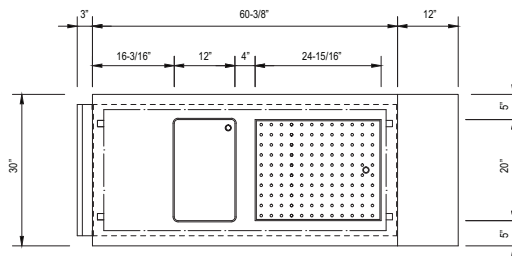
If ordering a height other than the standard 34", what height? _____

Qty: _____ @ \$5,995 = _____ (Red)

Qty: _____ @ \$5,995 = _____ (White)

Qty: _____ @ \$5,995 = _____ (Blue)

(+ FREIGHT CHARGES: Call or email Pasco for freight rates)



I have reviewed and approve these order details (please sign here)

Above pricing is in effect from October 17, 2016 through April 17, 2017. Any sell sheets that preceded this are null and void. We reserve the right to change specifications and product design without notice. Such revisions do not entitle the buyer to corresponding changes, improvements, additions or replacement for previously purchased equipment.

NDC
NATIONAL DAIRY COUNCIL

FUEL UP

A PROGRAM OF
Play60

THE NFL MOVEMENT FOR AN ACTIVE GENERATION

©2014 National Dairy Council. Fuel Up is a service mark of National Dairy Council.



LTI, INC.
lowtempind.com

9192 Tara Boulevard
Jonesboro, GA 30236